



TRANSVERSE SECTION

MENDEL · MESICK · COHEN · WAITE · HALL · ARCHITECTS
388 BROADWAY
ALBANY, NEW YORK 12207

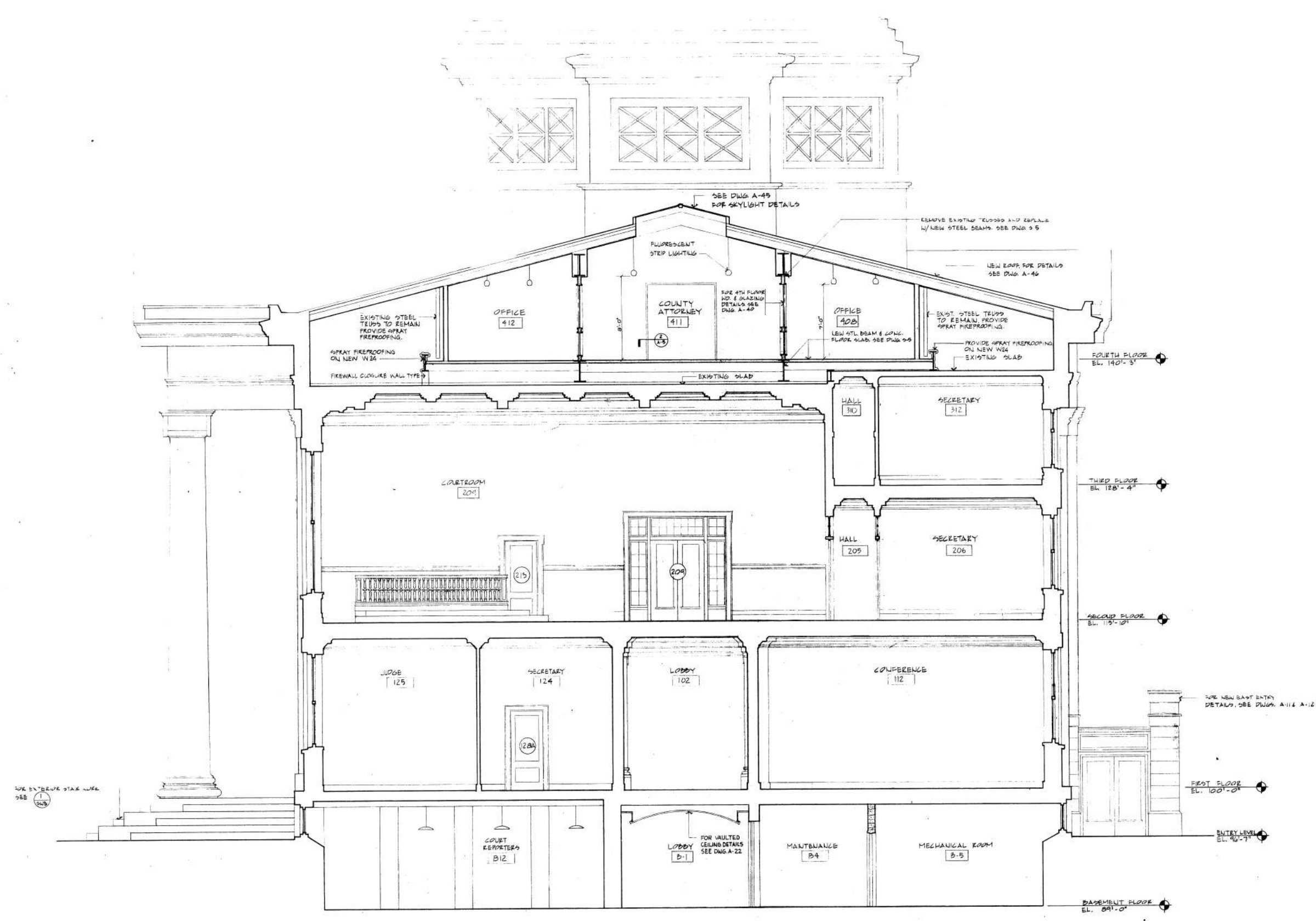
RESTORATION OF
ONTARIO COUNTY COURT HOUSE
CANANDAIGUA, NEW YORK

SCALE
AS NOTED
COMMISSION NO.
5502
DRAWN BY
D.J.W., L.L.
DATE
APRIL, 1954
REVISED

DRAWING NO.

A-9

SEE DWG. A-90 FOR
DOME ROOFING WORK.



1 TRANSVERSE SECTION
A-9 1/4" = 1'-0"